

# USER'S GUIDE

**Intramuscular Injection Assessment Buttocks model**

(BT-CSIM1)



# 1. Cautions

**\* This manual describes how to use BT-CSIM properly. Read it carefully to avoid damaging the product and injuring yourself. Pay attention to the following warnings.**

- ① Use only components provided or approved by BT Inc.
- ② Do not use the product for other purposes described in this manual.
- ③ If you disassemble or modify the product without any permission by BT Inc., you can not take after service. Also making imitated or altered products for commercial purposes is prohibited by law
- ④ Keep the product away from water or moisture. If the product gets wet, do not turn it on.
- ⑤ Do not use the product near strong magnetic fields or high voltage power lines. The product might malfunction due to the electromagnetic waves.
- ⑥ Do not use the product under a weather of lightning. It can cause the product malfunction and increases the risk of electric shock.
- ⑦ Do not use the product with temperatures below 0°C or above 40°C.  
(Operation temperature : 0°C ~ 40°C, Storage temperature : -10°C ~ 50°C)
- ⑧ Do not keep the product near hot places such as heaters. Deterioration of product or internal damage might occur.
- ⑨ Never clean the product with chemical substances such as solvent, benzene or thinner, as these may cause ignition or cause the surface deterioration.
- ⑩ Please make sure that clean water is the only fluid of injection
- ⑪ BT Inc. can change or adjust the product specification without any notice in order to improve the product.

## 2. Contents

<b>1. Cautions</b>	1
<b>2. Contents</b>	2
<b>3. Components</b>	3
<b>4. Features &amp; Functions</b>	4
<b>5. Hardwares</b>	
5-1 Power Connection	5
5-2 Buttocks holder assembling	5
5-3 Drain bottle installation	6
5-4 Setting and Cautions	6
<b>6. Basic Functions</b>	
6-1 Screen layout and User's guide	7
6-2 Training Mode	8
6-3 Evaluation Mode	11
6-4 Check-list and Score set-up	14
6-5 Result	15
6-6 Print the test result	16
6-7 Bluetooth connection	17

### 3. Components



Buttocks Body model



Buttocks holder



Tablet PC  
(Option)



Power converter



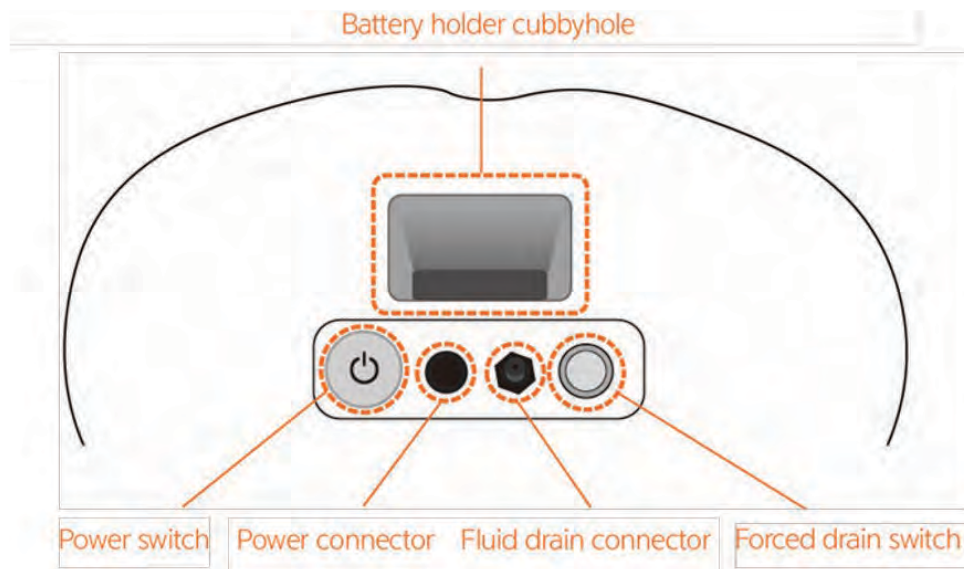
Drain tube



Drain Bottle

※ Auxiliary parts – Battery holder, Storage case and user's manual.

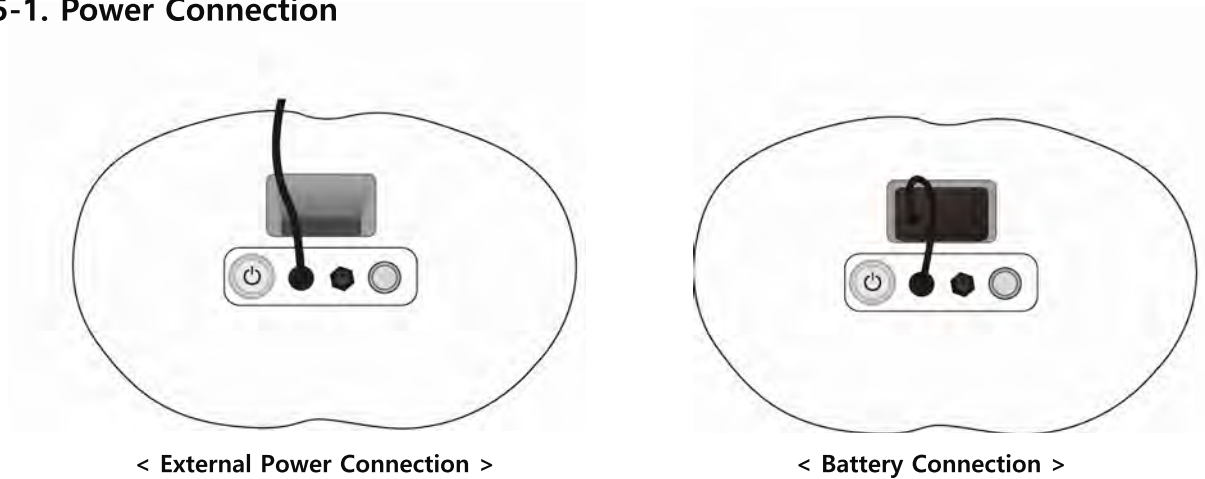
## 4. Features & Functions



- **Forced drain switch** : It turns on the drain pump to pumping out the injected fluid.
- **Fluid drain connector** : Connect the drain tube with the drain bottle.
- **Power connector** : Connect the power plug of power converter or battery.
- **Power switch** : It is possible to turn on/off the buttocks body model.
- **Battery holder cubbyhole** : Insert the battery holder in to this cubbyhole.

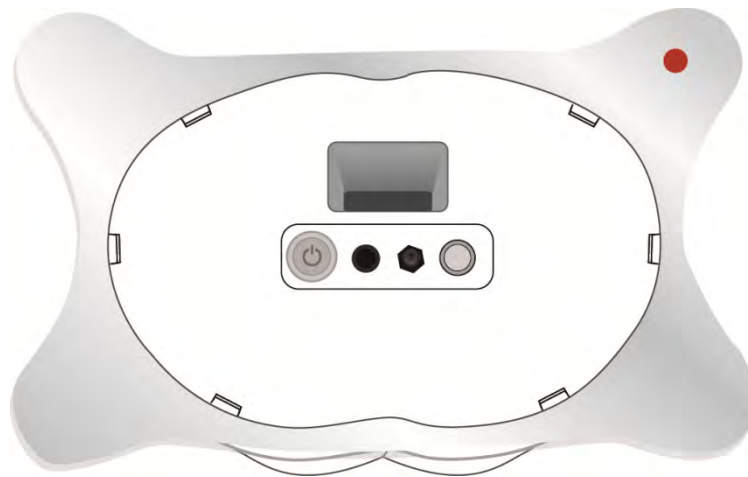
## 5. Hardwares

### 5-1. Power Connection



- The product can be powered by AC adapter or battery.
- When you use the battery, insert and connect it to the battery holder.

### 5-2. Buttocks holder assembling



The holder supports the position of the buttocks body model for various injection postures.

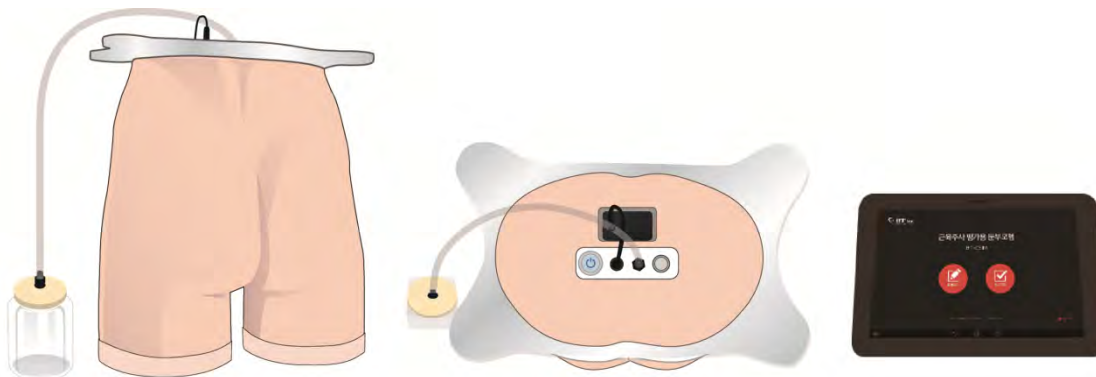
- Press down the buttocks holder on the top of the buttocks model until the holder snaps in the hooks and sound of click.
- Press the hook levers on the cover plate with both thumbs and lift up the buttocks holder.
- ※ Face the red sticker up when you place the holder.

### 5-3. Drain bottle installation



- Please connect the drain tube to drain bottle and drain connector.

### 5-4. Setting and Cautions



#### < Complete set up of the Product >

- ① According to '5. Hardware', connect the Power converter, drain bottle and buttocks holder to the buttocks body model.
- ② When setting is completed, turn the power of the buttocks body model on.
- ③ Turn on the power of Tablet PC, and then press the BT-CSIM1 icon to launch the program.
- ④ Before you are practicing the fluid injection, make sure the drain bottle is connected.



#### Cautions for injecting fluid

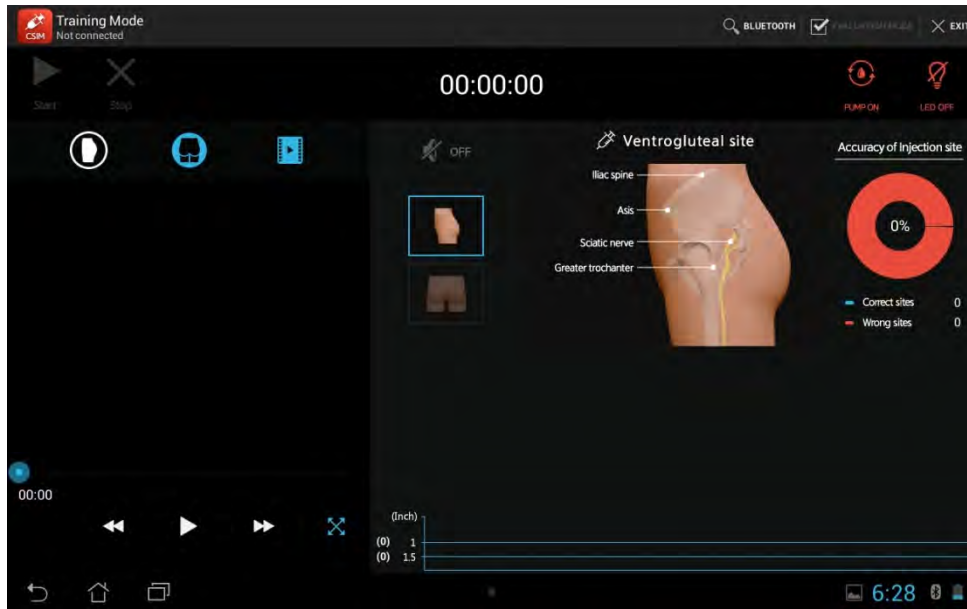
- Only the clean water is allowed for injection.
- Using different fluids besides water can cause the malfunction of sensing systems.
- Battery power consumption can be accelerated by the draining of fluids.
- Prefer to use the AC Power instead of battery.





## 6-2. Training Mode

### 6-2-1. Menu and Icons



Icon	Description	Icon	Description
	Add / Remove a Device (Add/Remove a buttocks body model)		Self-Practice (Practice Step)
	Move to Evaluation mode		Move Forward
	Terminate the Program		Play
	Start the Session		Move Backward
	Terminate the Session		Stop
	Drain Pump On		Zoom in
	Drain Pump Off		Zoom out
	Landmark LED On		Beep Sound On
	Landmark LED Off		Beep Sound Off
	Movie clip (Ventre.)		Ventre. Practice
	Movie clip (Dorso.)		Dorso. Practice



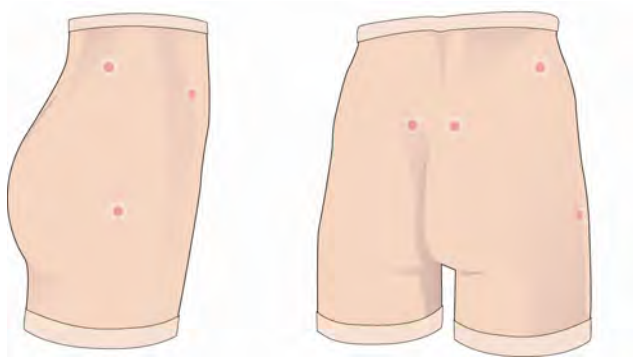
### Fluid draining pump

- Pumping cycle : after start the practice, the pump will operate for 20 seconds in every 5 minutes.
- When you want to drain the fluid manually, press the forced drain switch on the top of buttocks body model.
- If user changes the mode during the practice, pump will stop automatically.



### LED lights for palpation

- LED displays several landmark locations for palpations.  
(ASIS, PSIS, Greater Trochanter and iliac crest)



<LED landmark for Ventro.>

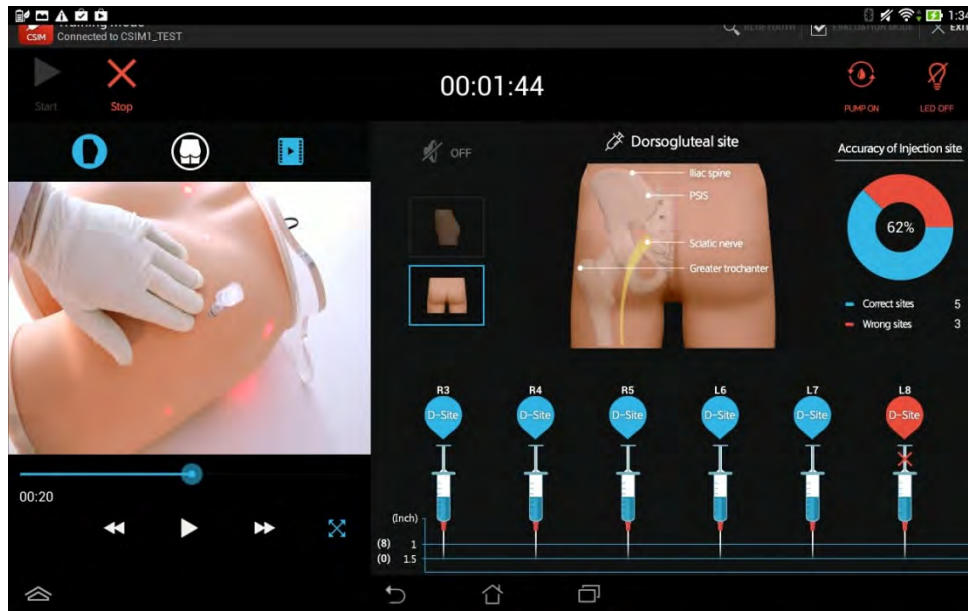
<LED landmark for Dorso.>



### Beep Sound ON/OFF

- During injection training, beep sound can inform you the injection locations.
- The beep sound can be turned on and off at the tablet PC.

## 6-2-2. Training Mode



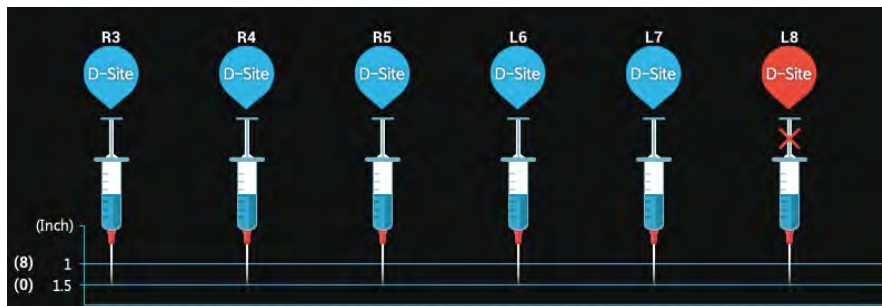
< Training Mode Screen >

During the training mode, user can practice with video at the same time. And It can be more helpful for the education purpose.



### Features of training mode

- There are no count limits of injection in the practice mode.
- User can practice injection by selecting Ventro. or Dorso. position during the practice.
- User can monitor the situation of correct and wrong injection along with depth.



<Training Situation>

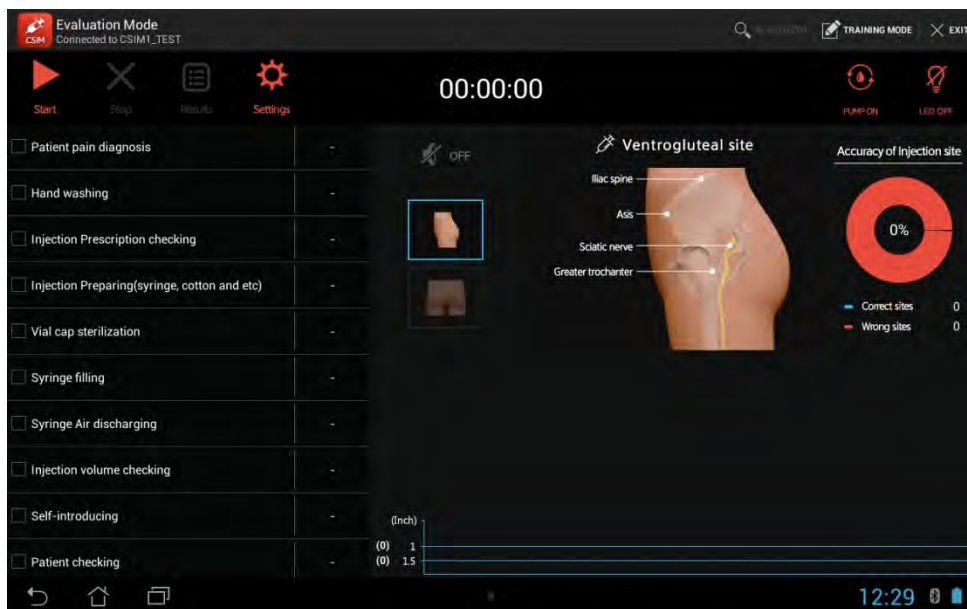


### Training situation display

- Ventro. or Dorso. injection locations will be displayed
- Injecting side will be displayed by 'L' for left side and 'R' for right side of the buttocks body model.
- When you are missing the allowed area for each locations, the red color balloon will be displayed.
- The horizontal cines show the injection depths (1 and 1.5inch) and counts for injection depths are displayed at the left side.

## 6-3. Evaluation Mode

### 6-3-1. Menu and Icons



Icon	Description	Icon	Description
	Add / Remove a Device (Add/Remove a buttocks body model)		Drain Pump Off
	Move to Training mode		Landmark LED On
	Terminate the Program		Landmark LED Off
	Start the Session		Beep sound On
	Terminate the Session		Beep sound Off
	Evaluation Results		Ventre. Practice
	Evaluation items and points set-up		Dorso. Practice
	Drain Pump On		



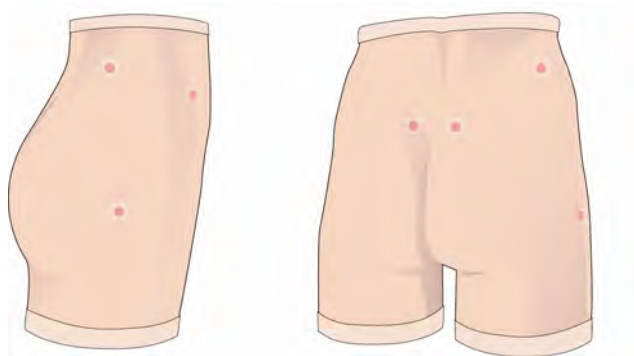
### Fluid draining pump

- Pumping cycle : after start the practice, the pump will operate for 20 seconds every 5 minutes.
- When you want to drain the fluid manually, press the forced drain switch on the top of buttocks model.
- If user changes the mode during the practice, pump will stop automatically.



### LED light for palpation

- LED displays several landmark locations for palpations.  
(ASIS, PSIS, Greater Trochanter and iliac crest)



<LED landmark for Ventro.>

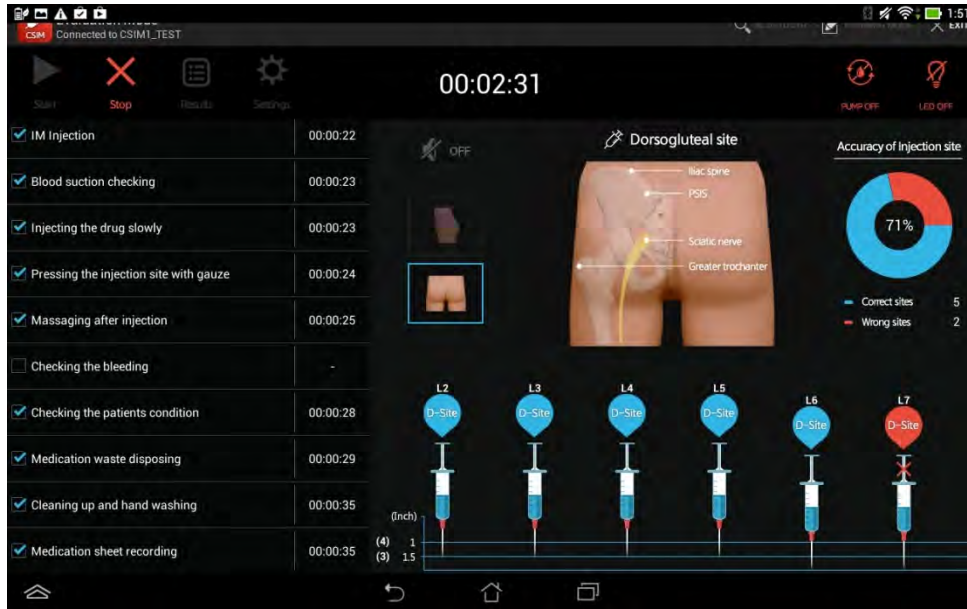
<LED landmark for Dorso.>



### Beep Sound ON/OFF

- During injection training, beep sound can inform you the injection locations.
- The beep sound can be turned on and off at the tablet PC.

## 6-3-2. Evaluation Mode



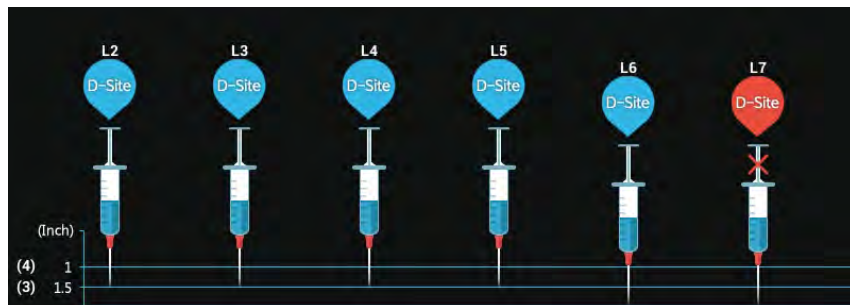
< Evaluation Mode Screen >

Realtime checking for manual evaluation issues are supported with the checklist at the left side of the screen.



### Features of evaluation mode

- Only 8 times of injections are allowed in the evaluation mode.
- At the end of evaluation, User can check and save the final result data.



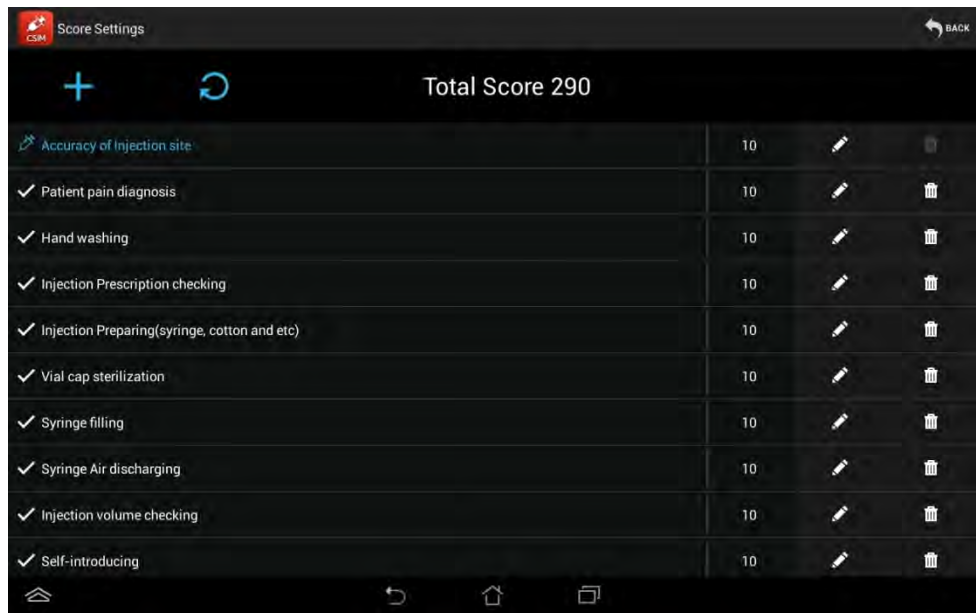
<Evaluation Situation>



### Evaluation situation display

- Ventro. or Dorso. injection locations will be displayed
- Injecting side will be displayed by 'L' for left side and 'R' for right side of the buttocks body model.
- When you are missing the allowed area for each locations, the red color balloon will be displayed.
- The horizontal lines show the injection depths (1 and 1.5inch) and counts for injection depths are displayed at the left side.

## 6-4. Check-list and Score set-up



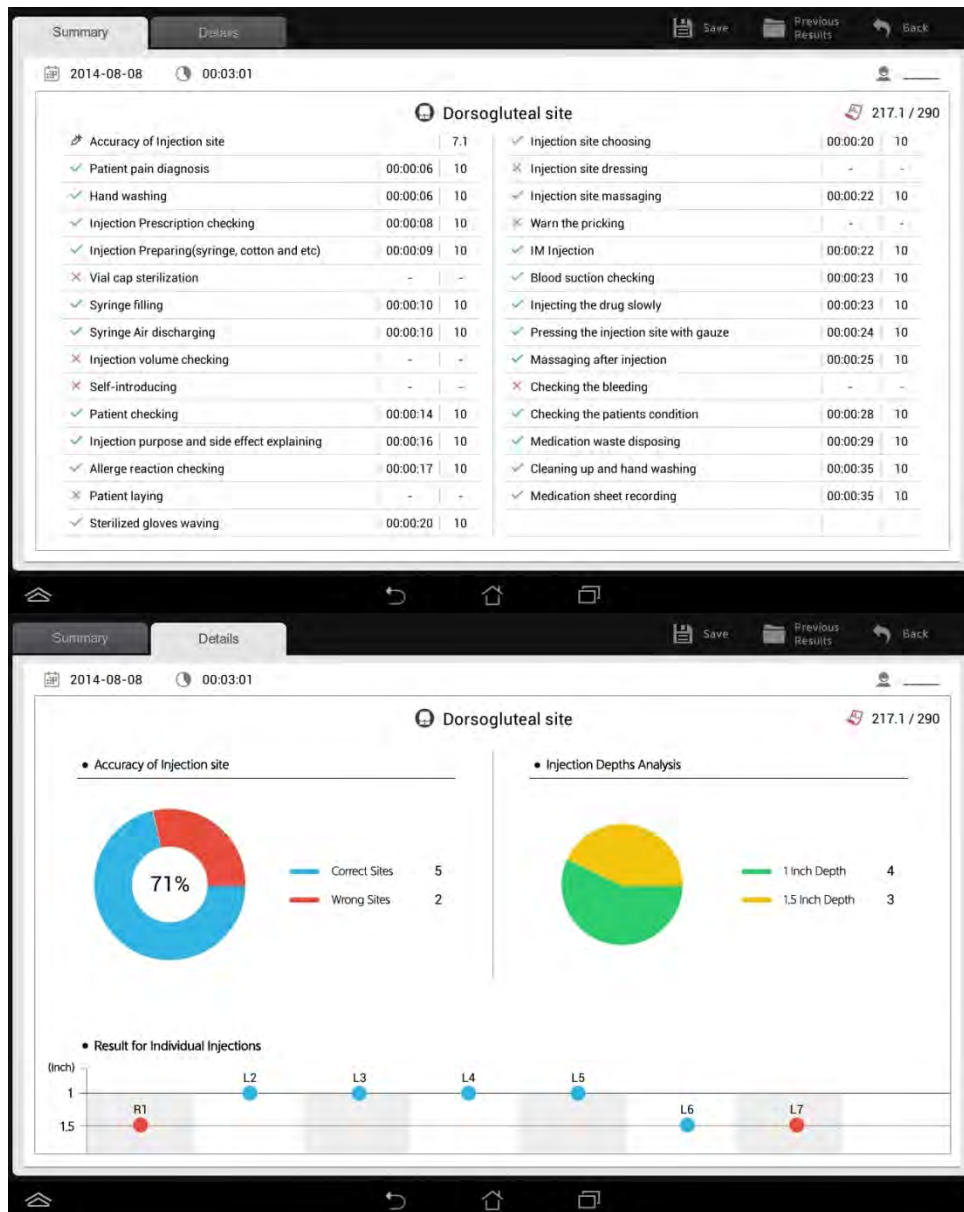
Icon	Description
	Add the evaluation issue
	Set-up Initialization
	Modify the Evaluation issues & Scores
	Delete the Evaluation issues
	Back to the Evaluation Session.

The latest checklist set up is maintained.

**Evaluation condition set up**

- User can add the issues up to 30.
- User can assign the points. (From -100 to 100)
- After modify the checklist, click the 'Move Backward' icon to apply the status of set-up.

## 6-5. Results



Icon	Description
	Save the test results
	Check the Previous results
	Back to evaluation Session

### User can check & Save the result data.



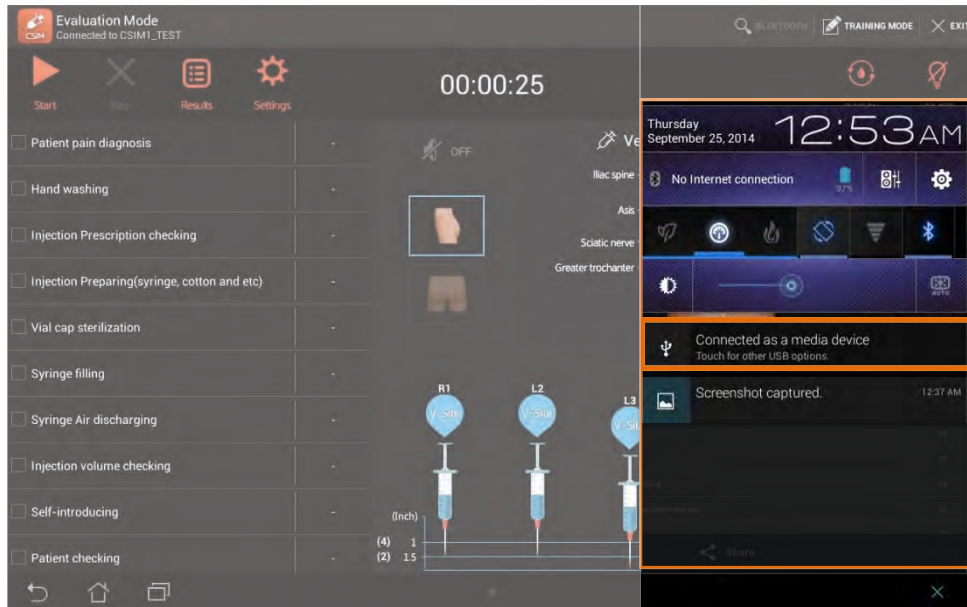
- When evaluation procedures are finished, user can check & save the data at the 'Summary'.

- User can check the previous test results using 'Previous results'.

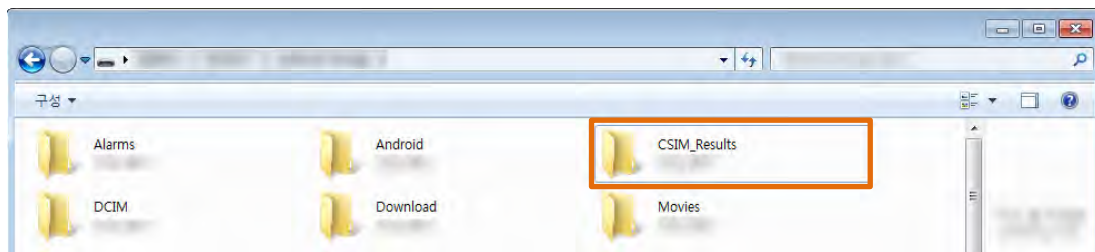


## 6-6. Print the test result

- ① Connect the data cable from tablet PC to other media device that you want to transfer the result data.



- ② Check the connection with Media device.

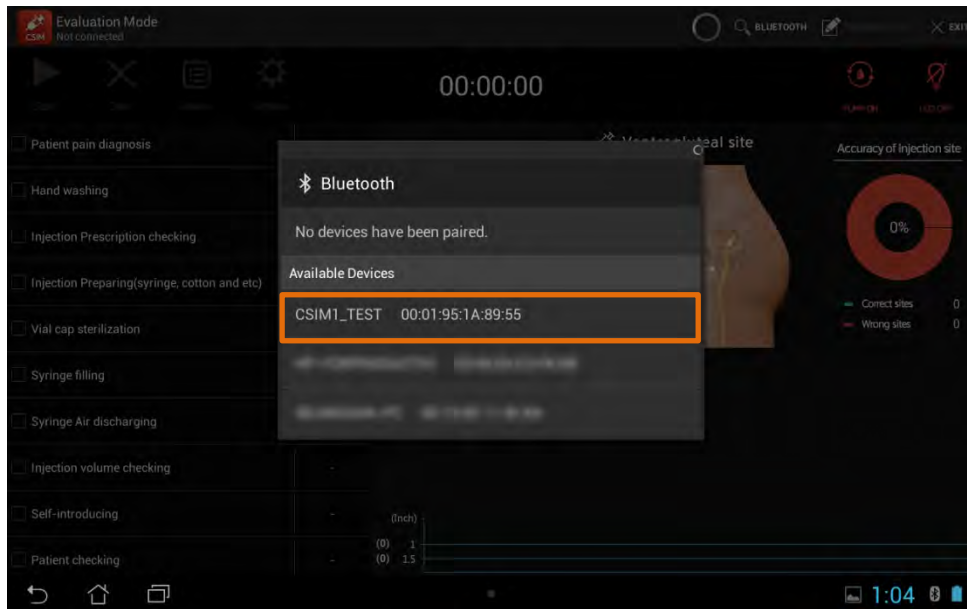



- ③ It is possible to open or print the test results via the rout below.

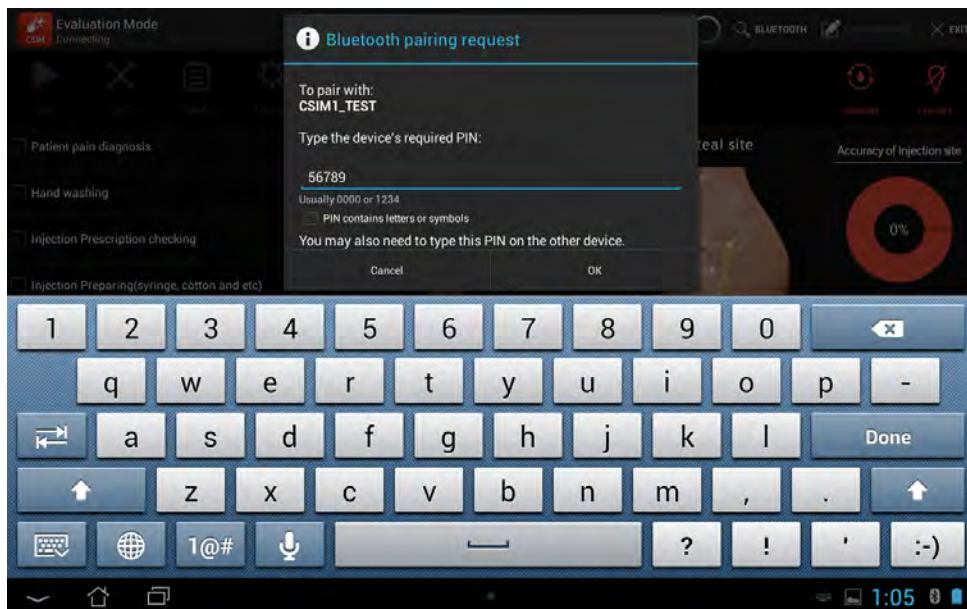
My computer > Name of Tablet PC > CSIM\_Results

## 6-7. Bluetooth connection

- Please refer to this page If user can not connect the blue-tooth caused by communications disruption



- ① First, check the power on of CSIM1 product.
- ② Click the  button to make sure the pairing with device.
- ③ Choose the device that user wants at the pairing device list. Then attempt the connection.



- ④ If user should re-pairing, enter the Pin Code as below. Then try pairing.

 **Pin Code : 56789**

- ⑤ Choose the device that user wants at the pairing device list. Then attempt the connection again.
- ⑥ when connection is complete, the device & tablet PC will connect together automatically.