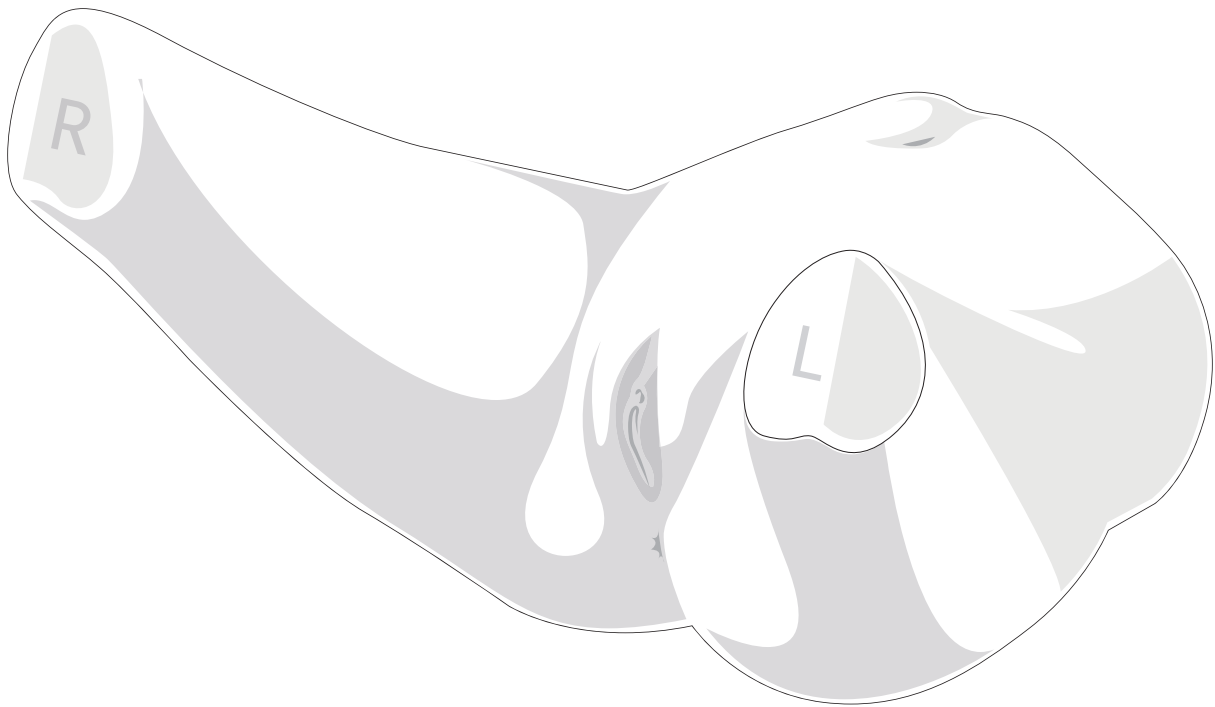


BT-CSCF

Female Catheterization Training Model

USER GUIDE



User Guide



Product Information

Product Name	Female Catheterization Training Model
Model Name	BT-CSCF
Manufacturer	BT Inc.
Country of Origin	Republic of Korea
Certification	

Product Specification

Dimensions	430 X 280 X 200mm
Weight	4.5kg
Battery	1EA of 6LR61 (9V)

Customer Service

Website	www.btinc.co.kr
Address	A-313, Samsung Techno-valley, 140, Tongil-ro, Deogyang-Gu, Goyang-Si, Gyeonggi-do, 10594, Republic of Korea
Telephone	+82-2-2038-2903
E-mail	bt@btinc.co.kr



Cautions for battery disposal

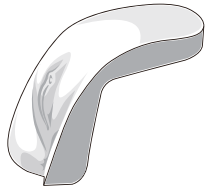
- * Please follow the regulations of corresponding area for the disposal of used batteries.

Cautions

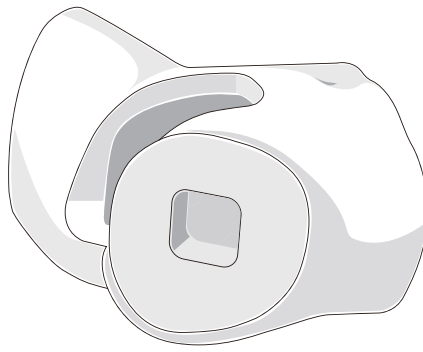
Please read it carefully to ensure correct usage and user's safety through understanding of the product.

- ① Use only components provided or approved by BT Inc.
- ② Do not use the product for other purposes described in this manual.
- ③ If you disassemble or modify the product without any permission by BT Inc, you cannot get the warranty. Also, making imitated or altered products for commercial purposes are prohibited by law.
- ④ During the usage, please contact us after any electricity power off when the product is overheated or smelled something burning
- ⑤ Keep the product away from water or moisture. If the product gets wet, do not turn it on.
- ⑥ Do not use the product near strong magnetic fields or high voltage power lines. The product might malfunction due to the electromagnetic waves.
- ⑦ Do not use the product under a weather of lightning. It can cause the product malfunction and increases the risk of electric shock
- ⑧ Do not use the product with temperatures below 0°C or above 40°C (Operation temperature : 0°C ~ 40°C, Storage temperature : -10°C ~ 50°C)
- ⑨ Do not keep the product near hot places such as heaters. Deterioration of product or internal damage might occur
- ⑩ Never clean the product with chemical substances such as solvent, benzene or thinner, as these may cause ignition or cause the surface deterioration.
- ⑪ BT Inc. can change or adjust the product specification without any notice in order to improve the product.

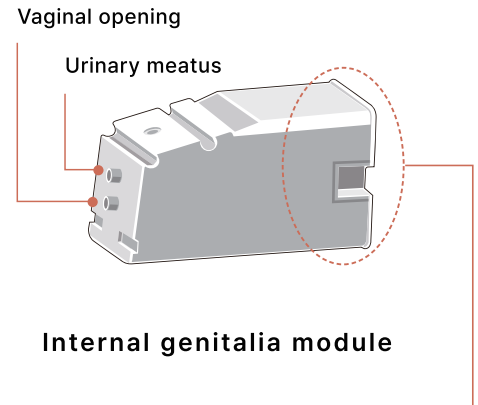
Components



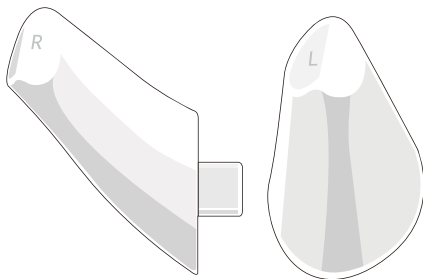
Female external genitalia model



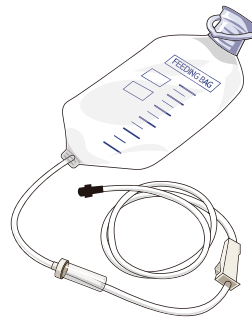
Adult buttocks model



Internal genitalia module

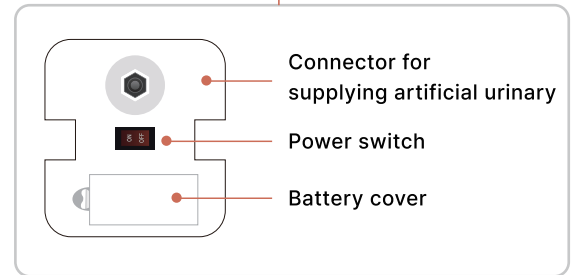


Extension legs (Left/Right)



Urinary supply bag

* etc. - Storage bag



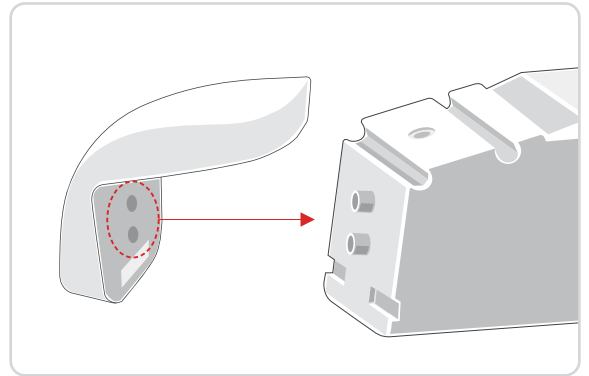
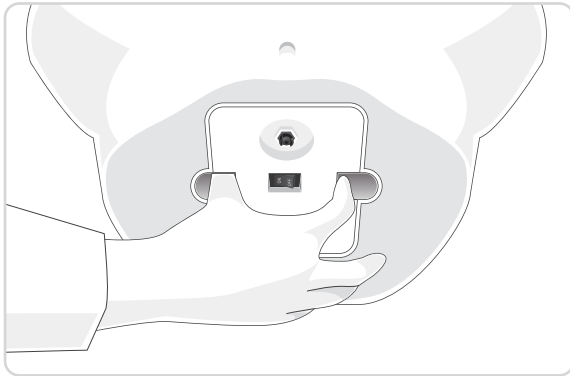
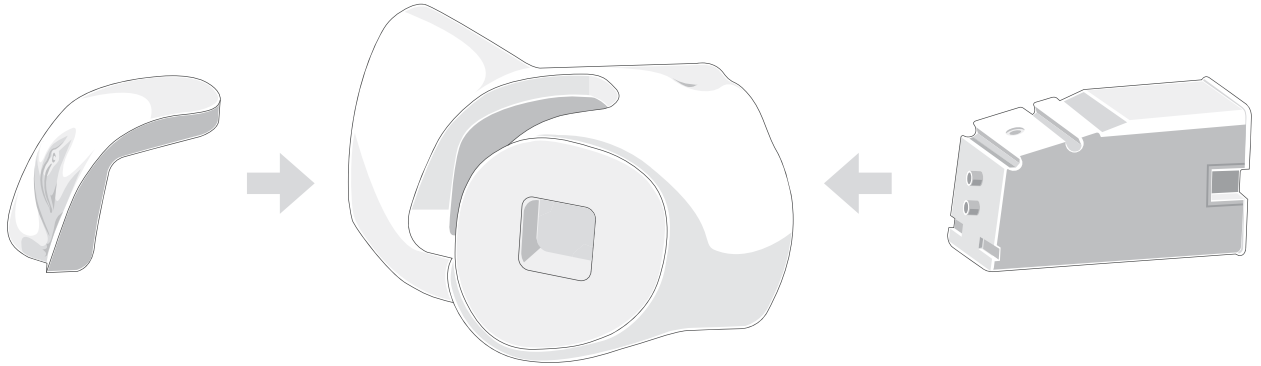
Consumables	
<ul style="list-style-type: none"> • Female external genitalia model • Internal genitalia module • Chemical check valve 	

Recommended Clinical Supply Sizes	
Nelaton's catheter	6~7Fr
Indwelling catheter	14~16Fr

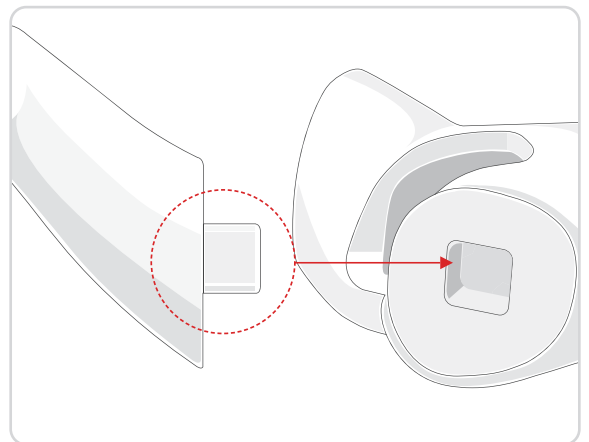
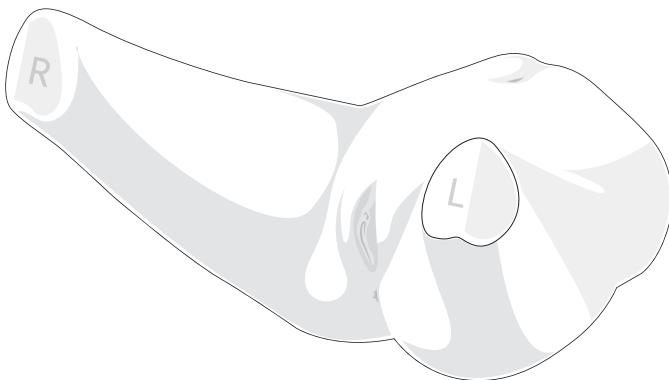
- The following clinical supply sizes are recommended for use with our Female Catheterization Training Model.
- Other sizes may cause damage to the products.
- Lifetime of the consumables may differ depending on the skill level of the users.

Installation

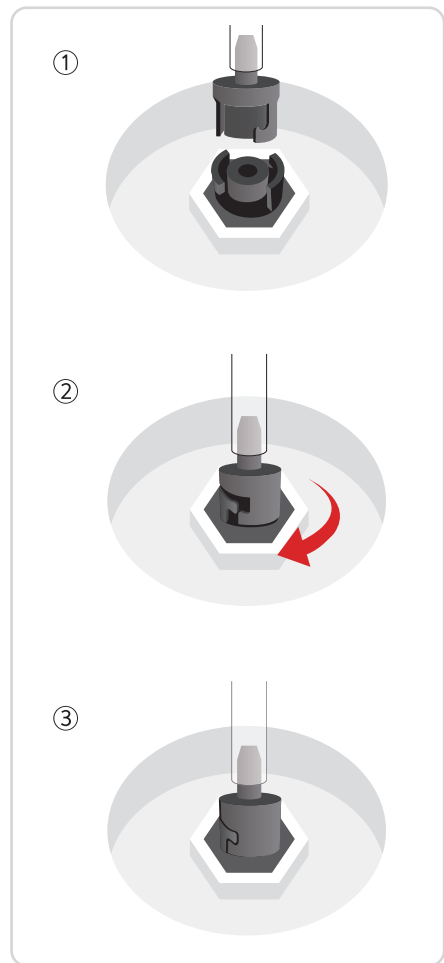
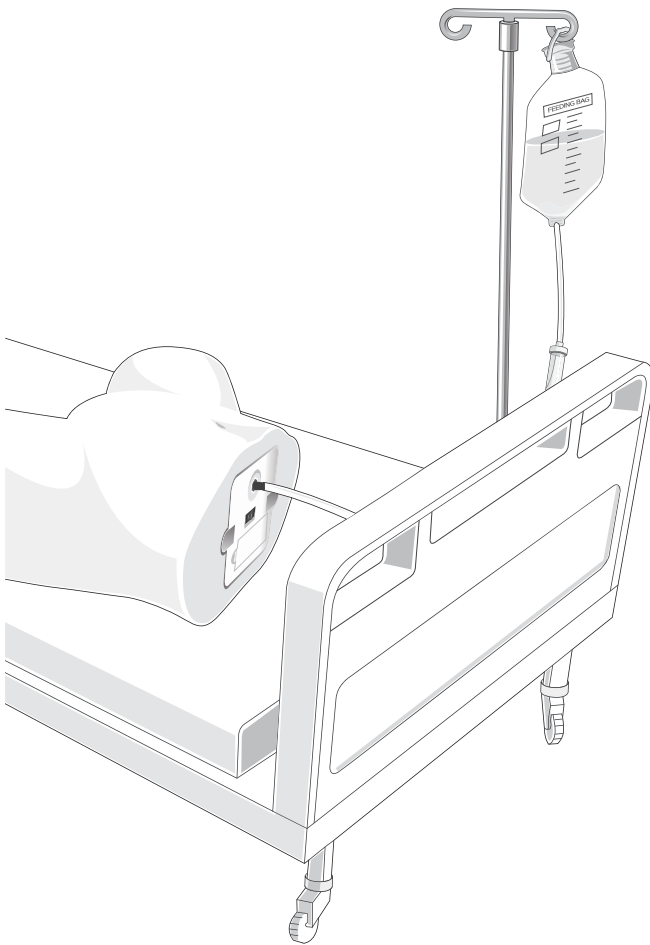
<Install female catheterization training model>



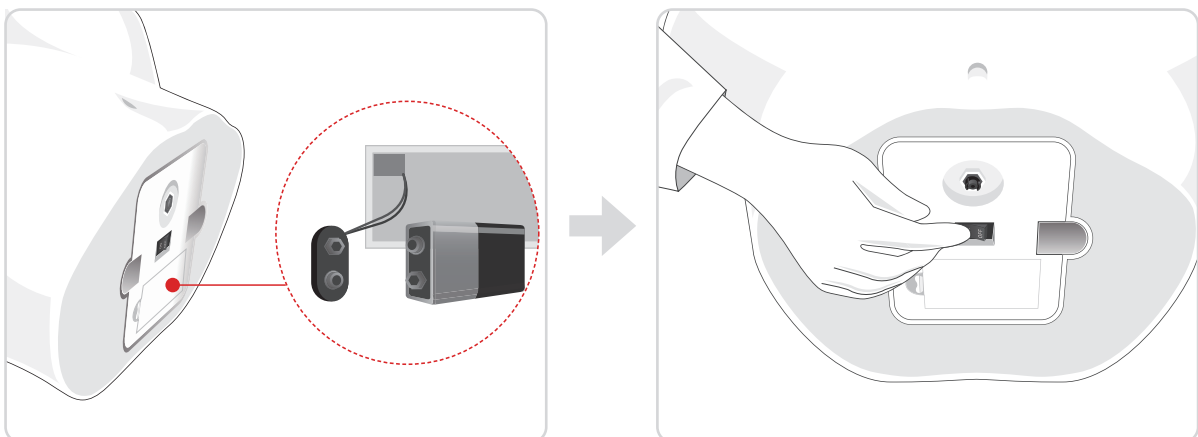
<Install extension legs>



<Install urinary supply bag>



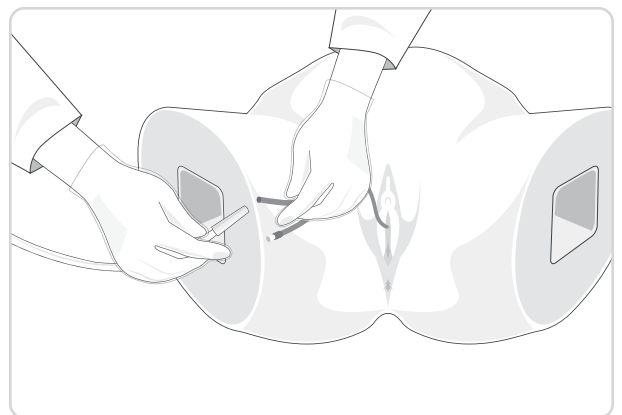
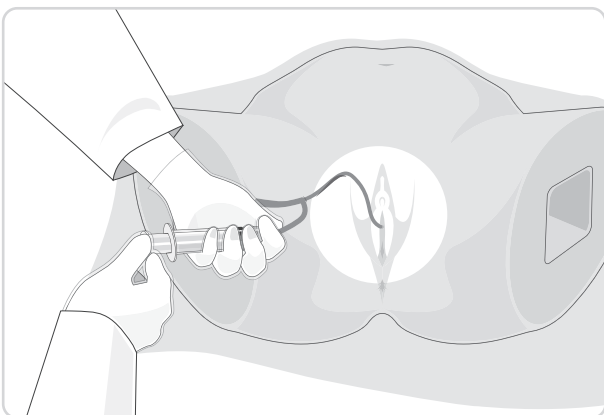
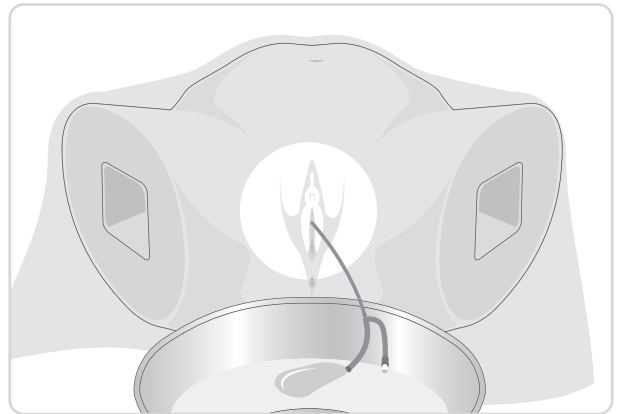
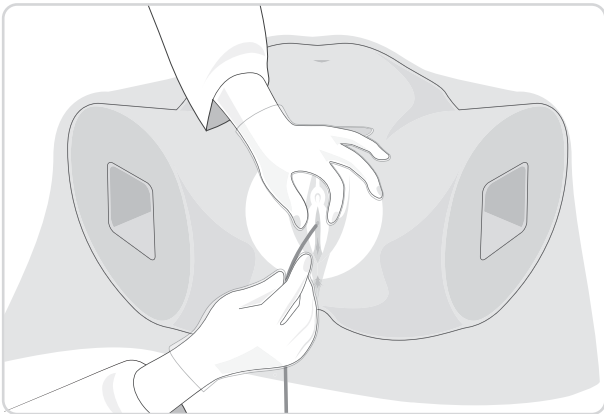
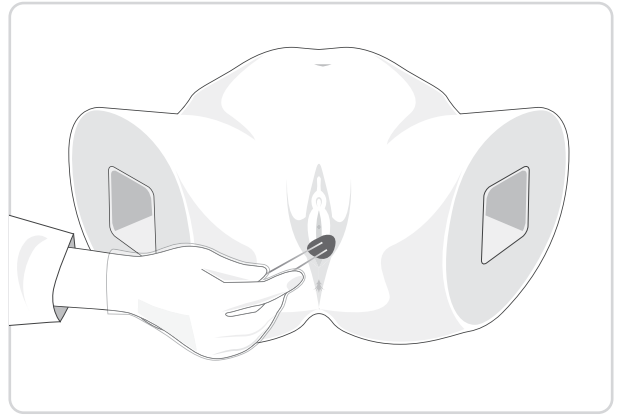
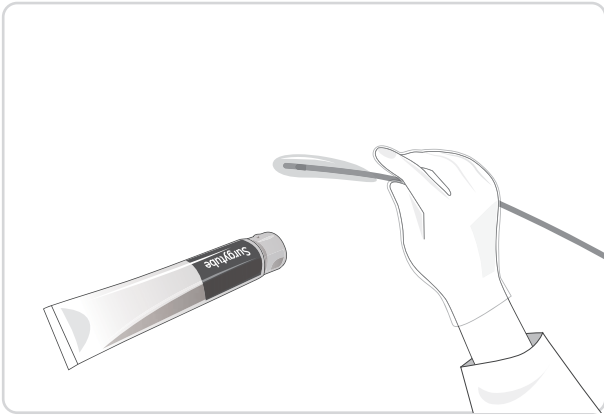
<Install battery>



- Turn the switch on after inserting a battery inside of the internal genitalia module.
- Please use a standard 6LR61 battery.

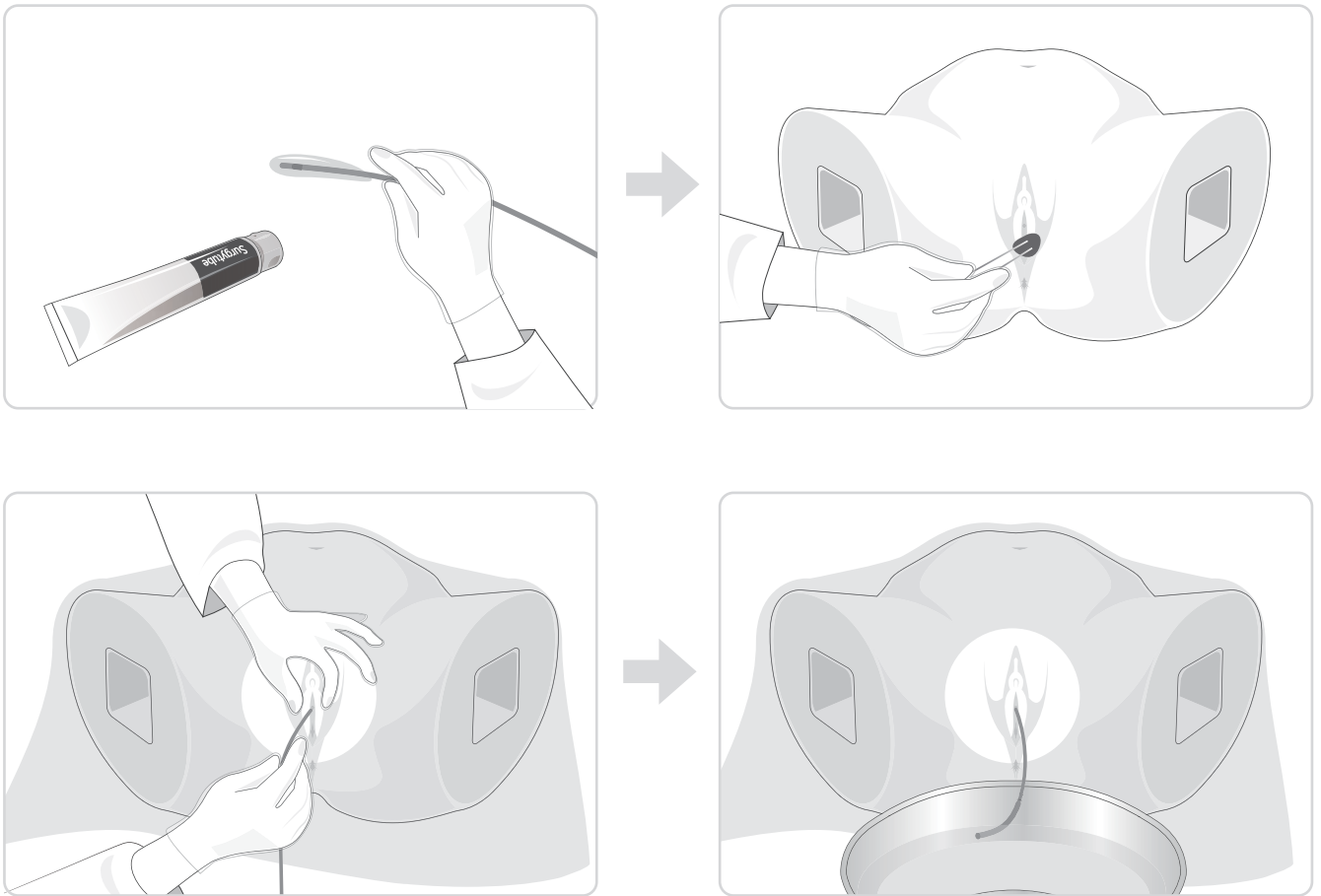
Functions

<Indwelling catheterization>

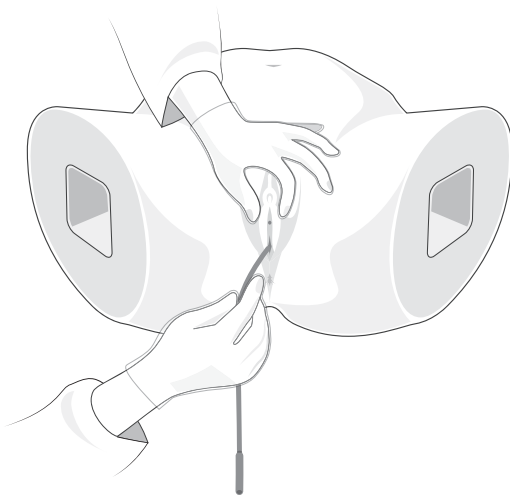


- When practicing urination, be sure to apply enough lubricant to the catheter.

<Nelaton catheterization>

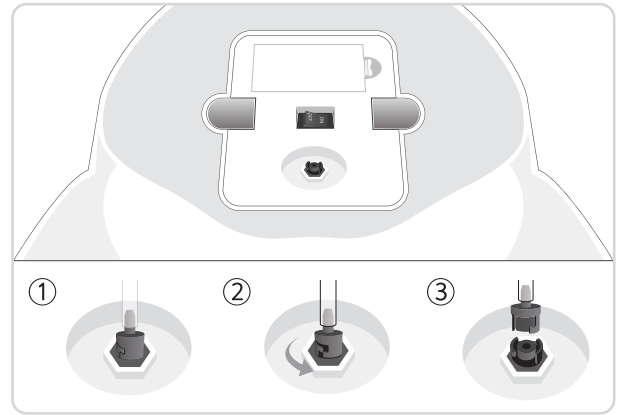
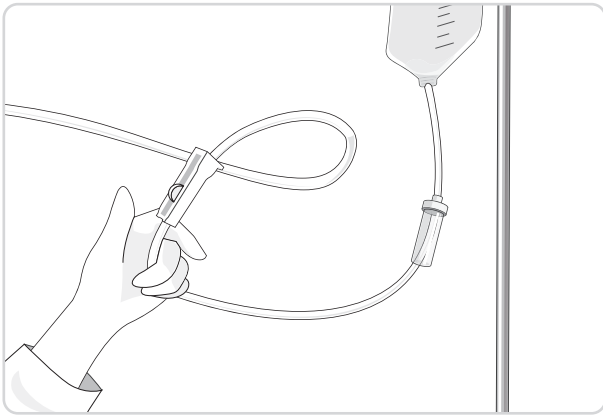


<Alarm sound when a catheter inserted into vagina>

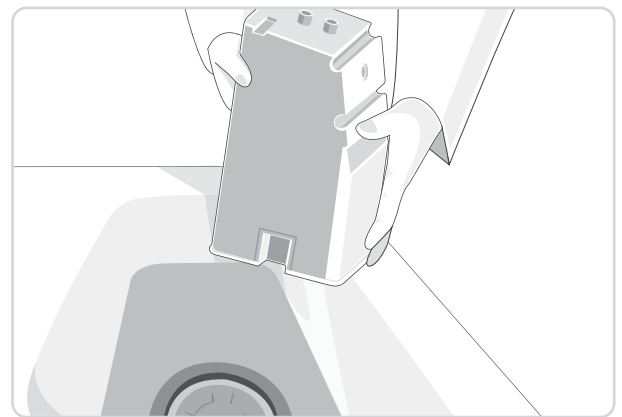
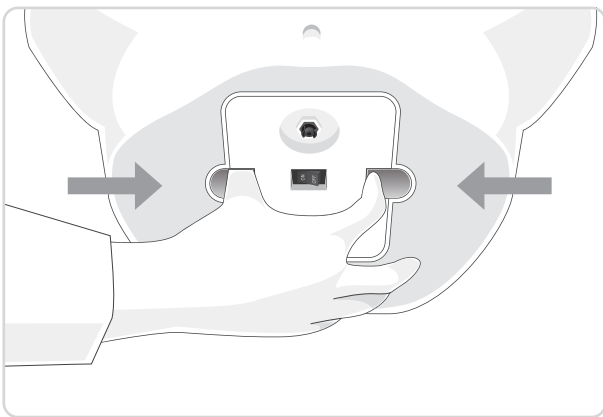


- Alarm alerts when a catheter inserted into vagina, not urethral meatus.
- Alarm stops when the inserted catheter is removed from vagina.
- The alarm can be turned on/off with a power switch.

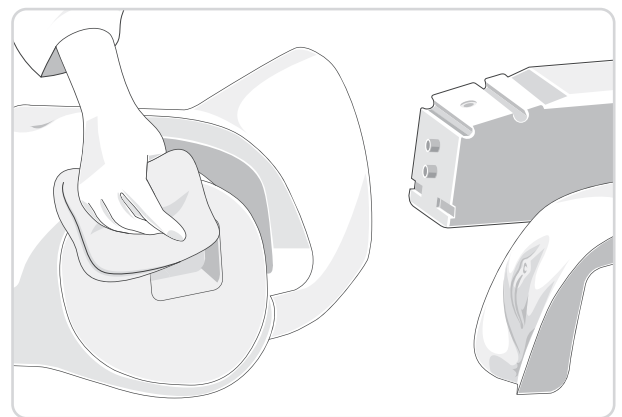
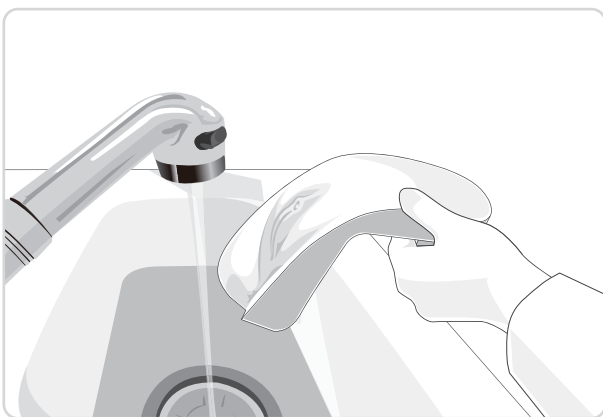
Cleaning and Storage



- Close the roller clamp of urinary supply bag and remove the urinary supply bag after making the manikin stand.



- Turn the power off, take the internal genitalia module out with fingers and flush the left urinary out.



- Wash the external genitalia model and wipe the moisture to make it dry for storage.

BT-CSCF

Female Catheterization Training Model

A-313, Samsung Techno-valley, 140, Tongil-ro
Deogyang-gu, Goyang-si, Gyeonggi-do, 10594, Republic of Korea

Homepage: www.btinc.co.kr / E-mail: bt@btinc.co.kr
Tel: +82-2-2038-2903, +82-51-903-1144 / Fax: +82 303-3130-0607

Copyright(c) BT Inc. All rights reserved.