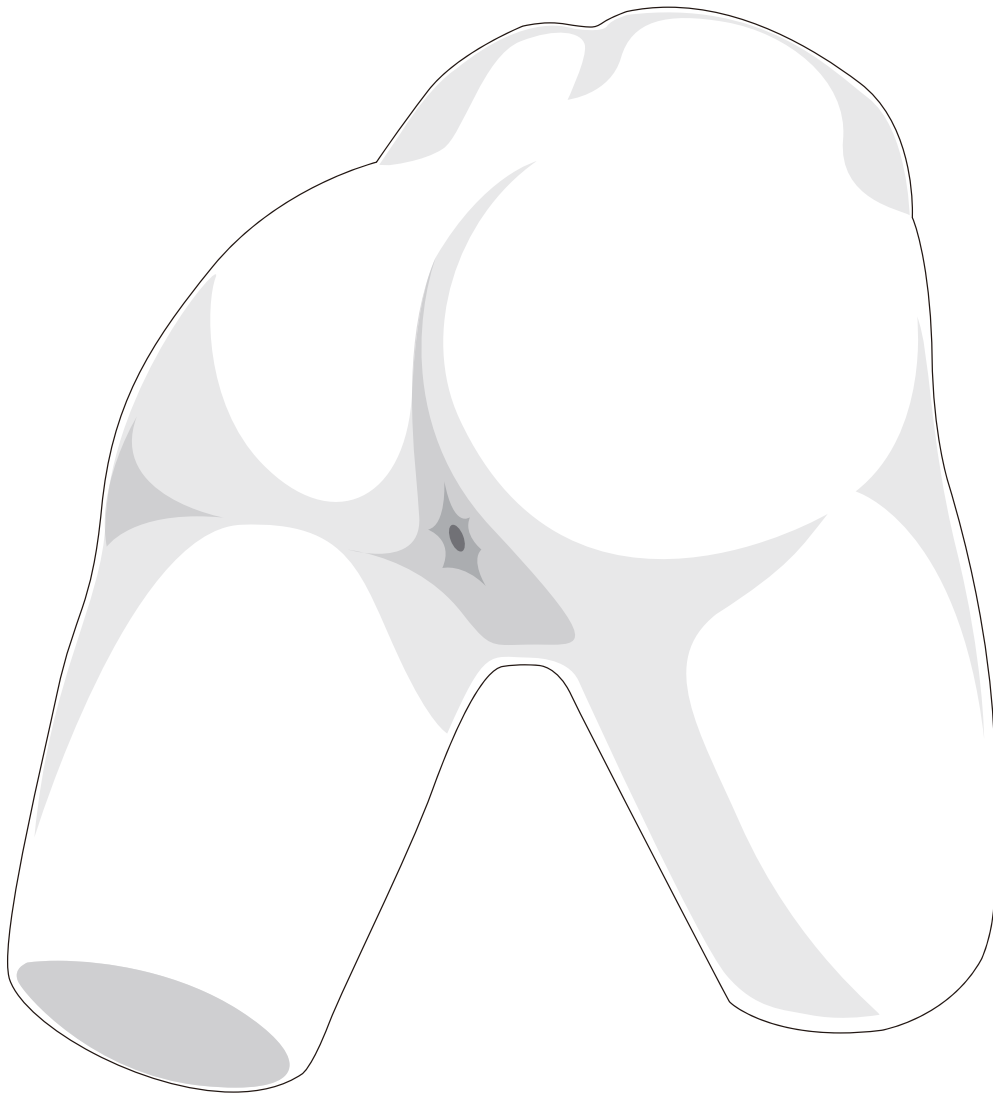


BT-CSEN

Enema Training Model

USER GUIDE



User Guide



Product Information

Product Name	Enema Training Model
Model Name	BT-CSEN
Manufacturer	BT Inc.
Country of Origin	Republic of Korea

Product Specification

Dimensions	330 X 430 X 340mm
Weight	3.5kg

Customer Service

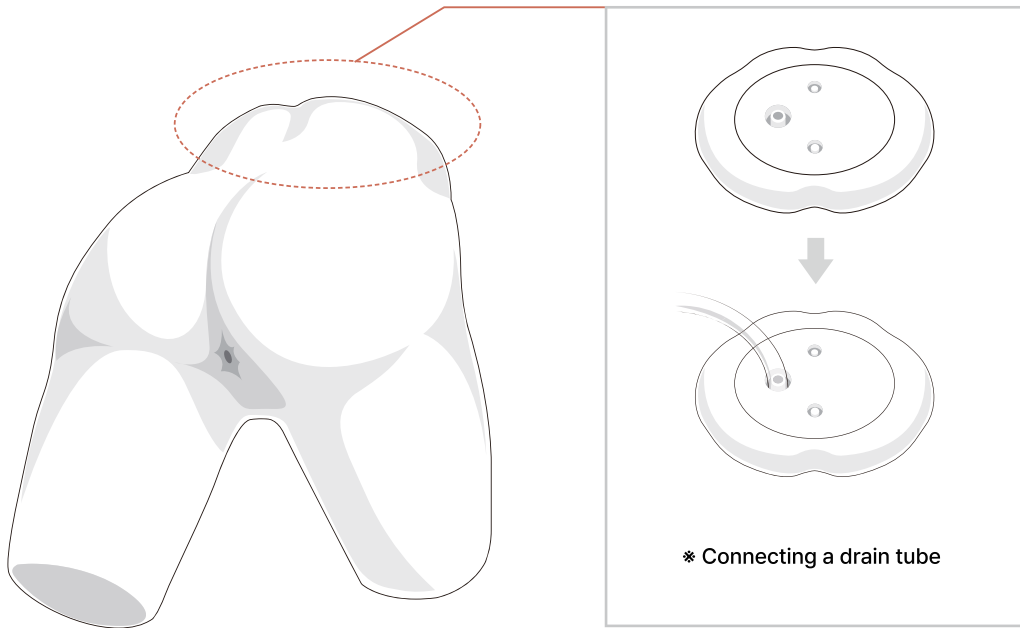
Website	www.btinc.co.kr
Address	A-313, Samsung Techno-valley, 140, Tongil-ro, Deogyang-Gu, Goyang-Si, Gyeonggi-do, 10594, Republic of Korea
Telephone	+82-2-2038-2903
E-mail	bt@btinc.co.kr

| Cautions

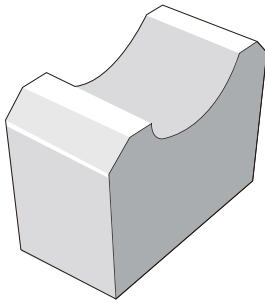
Please read it carefully to ensure correct usage and user's safety through understanding of the product.

- ① Do not use the product for other purposes described in this manual.
- ② If you disassemble or modify the product without any permission by BT Inc, you cannot get the warranty. Also, making imitated or altered products for commercial purposes are prohibited by law.
- ③ Please avoid extremely hot or cold place and do not store it in a humid place for a long time since it may cause a deformation or a damage to the product.
- ④ Never clean the product with chemical substances such as solvent, benzene or thinner, as these may cause ignition or cause the surface deterioration.
- ⑤ BT Inc. can change or adjust the product specification without any notice in order to improve the product.

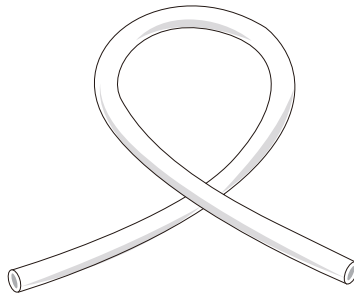
Components



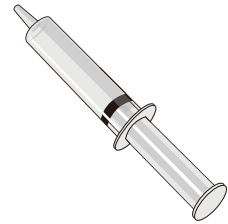
Adult buttocks model



Stand



Drain tube



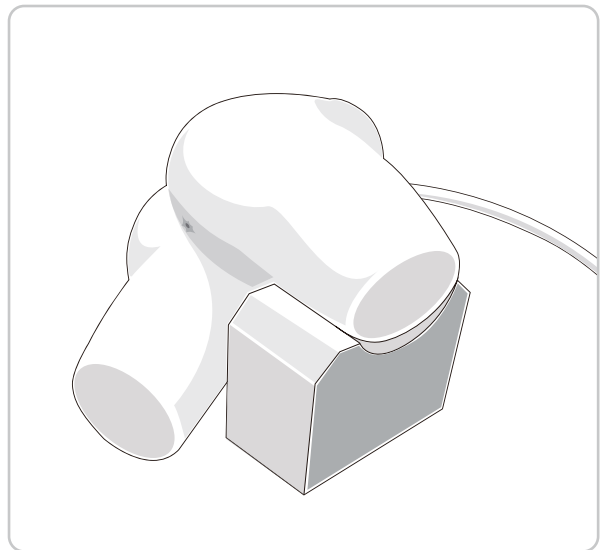
Cleaning Syringe

* etc. - Storage bag

Recommended Clinical Supply Sizes	
Rectal tube	14~20Fr, 24~28Fr
Enema Syringe	50cc

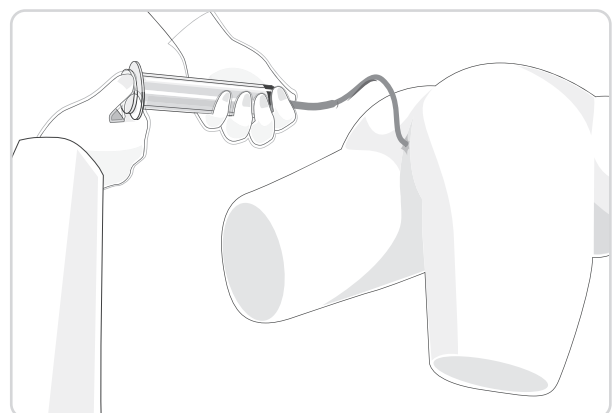
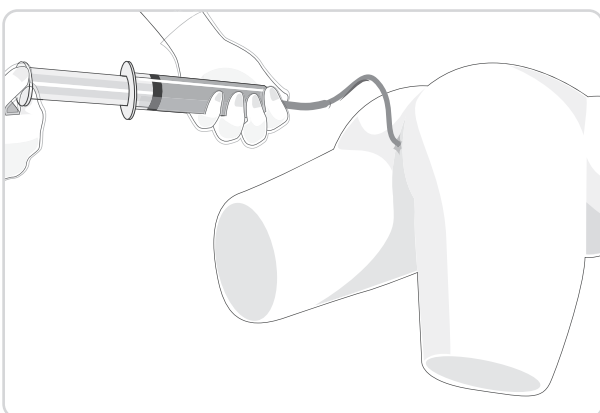
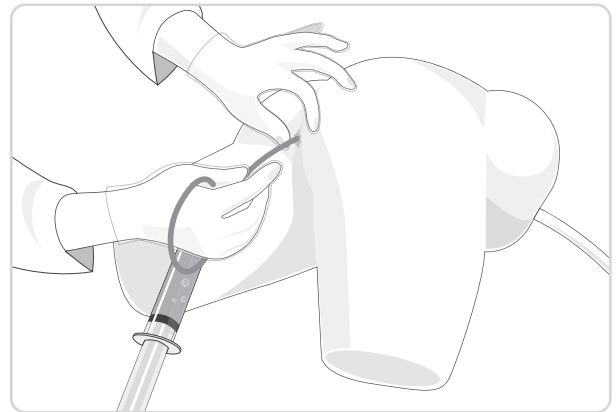
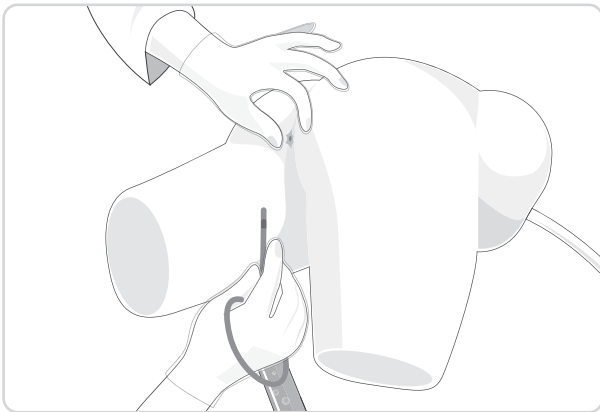
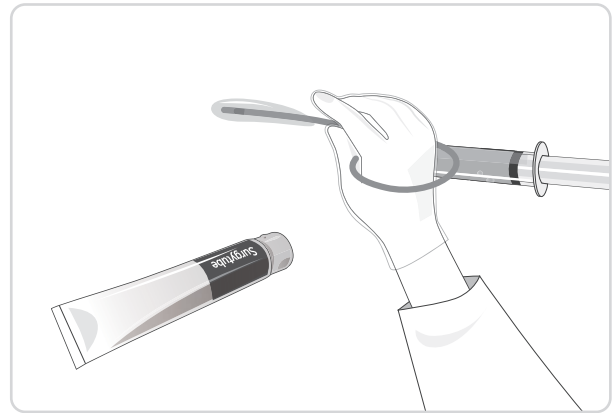
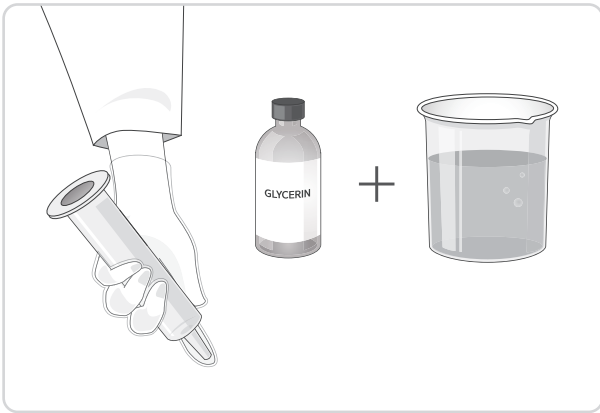
- The following clinical supply sizes are recommended for use with our Enema Training Model.
- Other sizes may cause damage to the products.
- Lifetime of the consumables may differ depending on the skill level of the users.

Installation



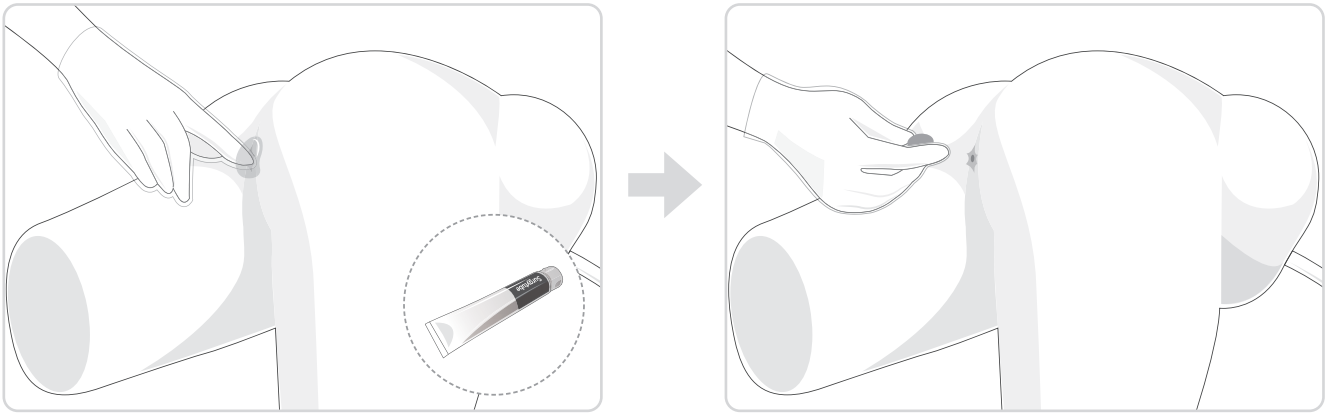
Functions

<Enema with glycerin>



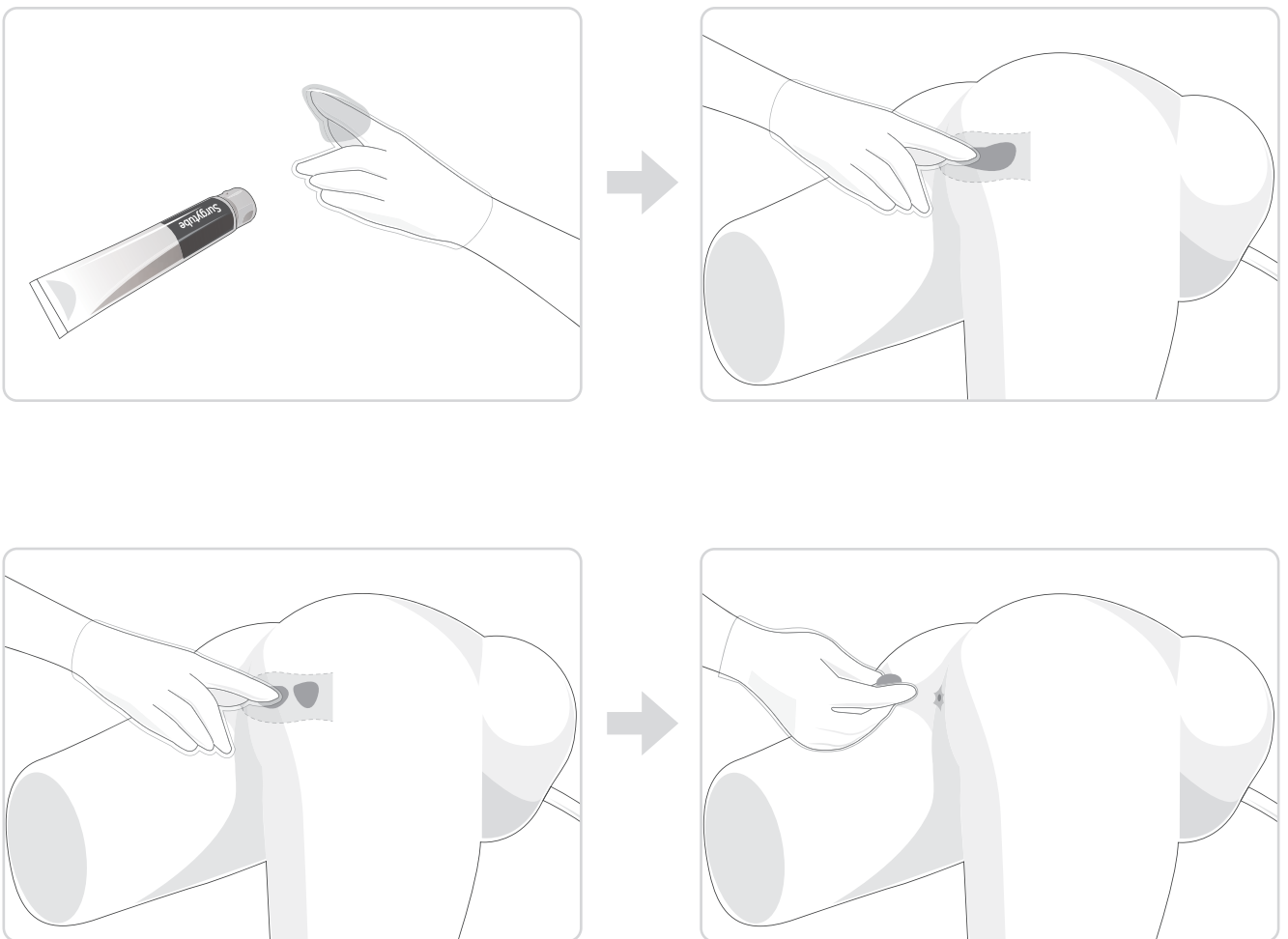
- Drain tube must be connected during the training.
- When practicing the enema, be sure to apply enough lubricant to the rectal tube.

<Training preparation with artificial feces>



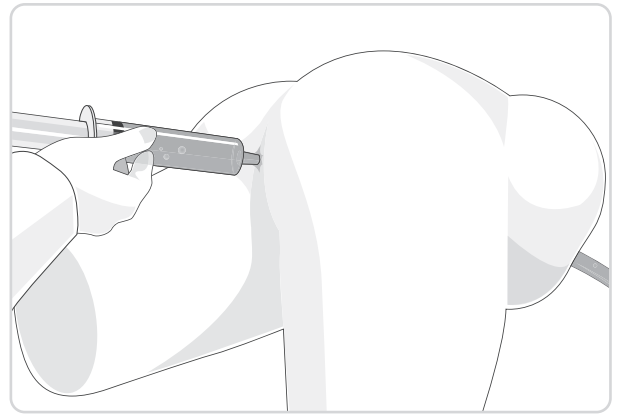
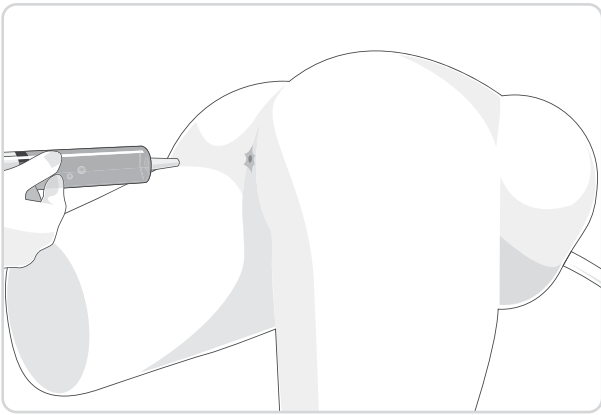
- Lubricate anus and insert artificial feces into anus.

<Artificial feces removal practice>

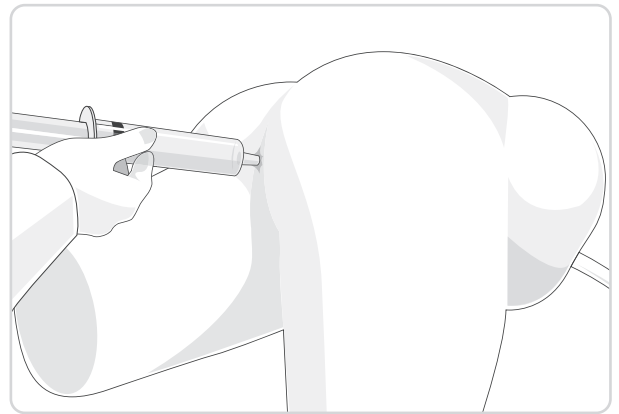
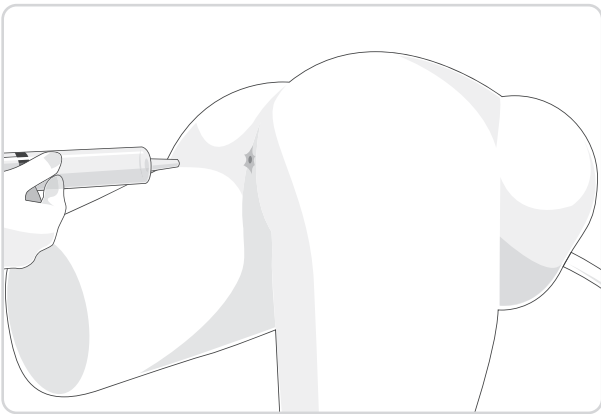


- Inserted artificial feces must be removed after training to prevent anus clogged.

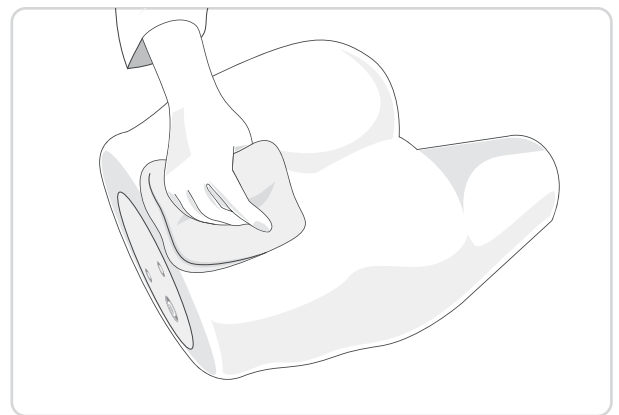
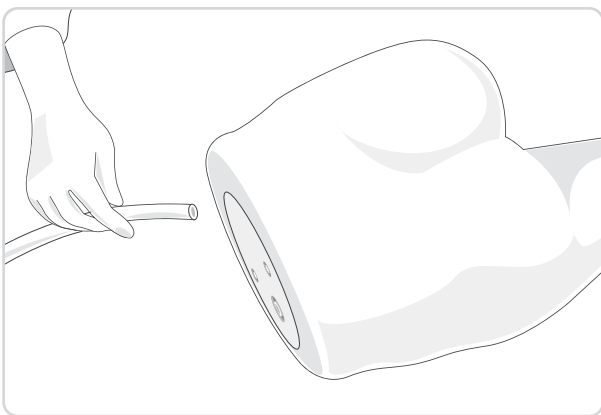
Cleaning and Storage



- Fill the syringe with water and inject water into anus to clean. (Repeat 1~2 times)



- Fill the syringe with air and inject air into anus to remove left moisture. (Repeat 2~3 times)



- Disconnect drain tube and wipe the moisture to make it dry for storage.
- Drain tube must be connected during drainage.

BT-CSEN

Enema Training Model

A-313, Samsung Techno-valley, 140, Tongil-ro
Deogyang-gu, Goyang-si, Gyeonggi-do, 10594, Republic of Korea

Homepage: www.btinc.co.kr / E-mail: bt@btinc.co.kr
Tel: +82-2-2038-2903, +82-51-903-1144 / Fax: +82 303-3130-0607

Copyright(c) BT Inc. All rights reserved.