


BT-CSIM-T

# Intramuscular Injection Training Model

## USER GUIDE



## Product Information

Product Name	Intramuscular Injection Training Model
Model Name	BT-CSIM-T
Manufacturer	BT Inc.
Country of Origin	Republic of Korea
Certification	

(Contains FCC ID : S7A-IW05)

## Product Specification

Dimensions	330 X 260 X 380mm
Weight	5.5kg
Power Converter	Input AC100-240~, 50/60Hz, 0.4A Output DC 12V, 1.5A
Battery	6LF22 - 1EA(9V)

## Customer Service

Website	<a href="http://www.btinc.co.kr">www.btinc.co.kr</a>
Address	A-313, Samsung Techno-valley, 140, Tongil-ro, Deogyang-Gu, Goyang-Si, Gyeonggi-do, 10594, Republic of Korea
Telephone	+82-2-2038-2903
E-mail	<a href="mailto:bt@btinc.co.kr">bt@btinc.co.kr</a>



## Cautions for battery disposal

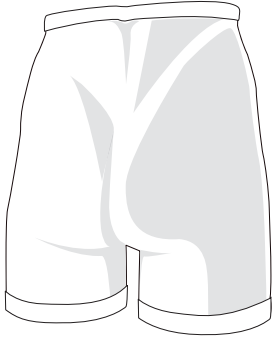
- \* Please follow the regulations of corresponding area for the disposal of used batteries.

# Cautions

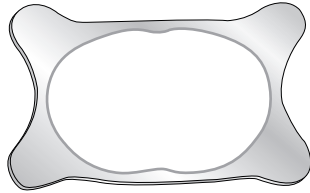
Please read it carefully to ensure correct usage and user's safety through understanding of the product.

- Ⓞ Use only components provided or approved by BT Inc.
- Ⓞ Do not use the product for other purposes described in this manual.
- Ⓞ If you disassemble or modify the product without any permission by BT Inc, you cannot get the warranty. Also, making imitated or altered products for commercial purposes are prohibited by law.
- Ⓞ During the usage, please contact us after any electricity power off when the product is overheated or smelled something burning
- Ⓞ Keep the product away from water or moisture. If the product gets wet, do not turn it on.
- Ⓞ Do not use the product near strong magnetic fields or high voltage power lines. The product might malfunction due to the electromagnetic waves.
- Ⓞ Do not use the product under a weather of lightning. It can cause the product malfunction and increases the risk of electric shock
- Ⓞ Do not use the product with temperatures below 0°C or above 40°C  
(Operation temperature : 0°C ~ 40°C, Storage temperature : -10°C ~ 50°C)
- Ⓞ Do not keep the product near hot places such as heaters. Deterioration of product or internal damage might occur
- Ⓞ Never clean the product with chemical substances such as solvent, benzene or thinner, as these may cause ignition or cause the surface deterioration.
- Ⓞ Please make sure that clean water is the only fluid of injection
- Ⓞ BT Inc. can change or adjust the product specification without any notice in order to improve the product.

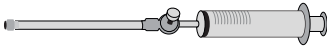
## Components



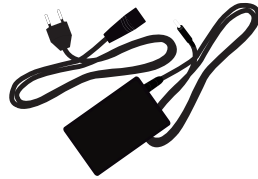
**Buttocks Body model**



**Positioning holder**



**Air pumping syringe**



**Power converter**



**Drain tube**



**Drain bottle**

\* etc. - Battery holder, Storage case

## Consumables & Recommended Clinical Supply Sizes

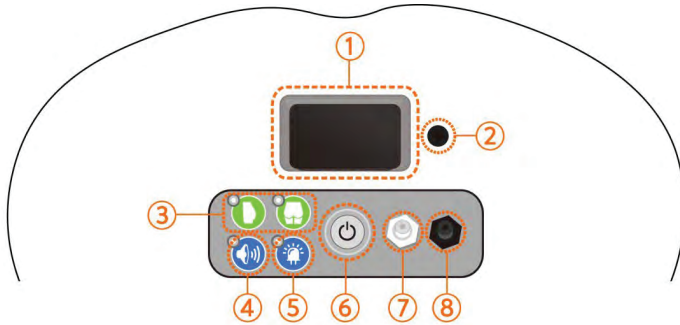
Consumables	
• Skin(buttocks)	

Recommended Clinical Supply Sizes	
Needle	3cc-5cc, 23G

- The following clinical supply sizes are recommended for use with BT-CSIM-T model.
- Other sizes may cause damage to the products.
- Lifetime of the consumables may differ depending on the skill level of the users.

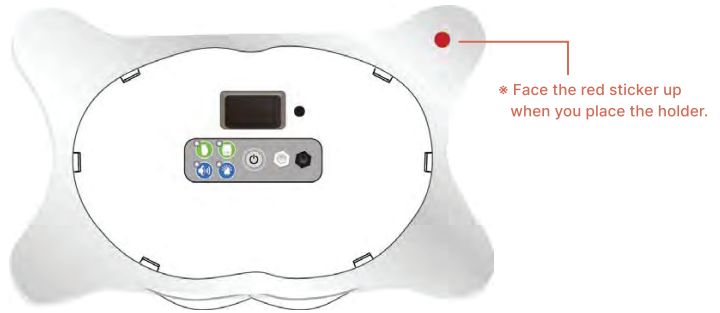
# Hardware

## 1. Features & Functions



- ① Battery holder cubbyhole : Insert the battery holder in to this cubbyhole.
- ② Power Connector : Connect the power plug of power converter of battery.
- ③ Mode selection button for Ventro/Dorso : Choose the injection location.
- ④ Alarm button : User can check OK/NG through Alarm sound.
- ⑤ LED button : User can check OK/NG through LED
- ⑥ Power button : ON/OFF
- ⑦ Air pumping connector : Connect the Air pumping syringe.
- ⑧ Drain connector : Connect the Drain bottle container.

## 2. Assembly of positioning holder



- The holder supports the position of the buttocks body model for various injection postures.
- Press down the buttocks holder on the top of the buttocks model until the holder snaps in hooks and you hear a click.
- When you remove the holder from the buttocks, Press the hook levers on the cover plate with both thumbs and lift up the buttocks holder.

## 3. Power Connection



<AC Power Connection>



<Battery Connection>

- The product can be powered by AC adapter or battery.
- When you use the battery, insert and connect it to the battery holder.

#### 4. Installation of drain bottle

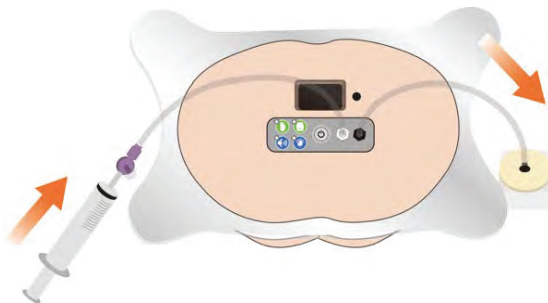


- Please connect the drain tube to drain bottle and drain connector.

#### 5. Air pumping syringe connection



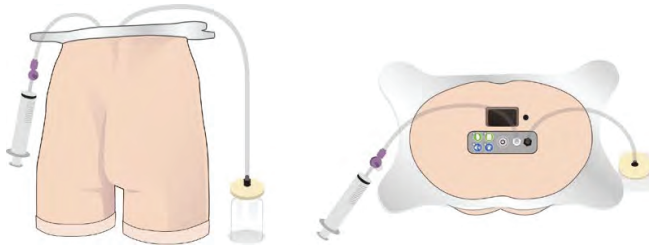
- Please connect the air pumping syringe to the air injection connector(white color).



- In order to drain the injected liquid from the buttocks model, pumping the syringe piston with multiple times.



## 6. Injection practice



### < Complete set up of the Product >

- ① Connect the power converter, drain bottle and buttocks holder to the buttocks body model referring to the instructions of "Hardware".
- ② When setting is completed, turn the power of the buttocks body model on.
- ③ User should choose the training mode (Ventre/Dorso).
- ④ Alarm/LED On/Off is available.
- ⑤ Find the greater trochanter and ilium locations (Iliac spine, ASIS, PSIS) by palpation.
- ⑥ Use clean water only for injection practice and you must connect the drain bottle.

#### \* Cautions for injecting fluid

- Only the **clean water** is allowed for injection.
- Using different fluids besides water can cause the malfunction of sensing systems.
- Battery power consumption can be accelerated by the draining of fluids.
- Using AC Power is more recommended than a battery.

## ■ Cleaning and Storage

- If you need to store the product for long periods of time, please wipe the product with ethanol cotton or fabric. After the buttocks model is dried, please put the "Baby powder" all around the buttocks skin and wipe the product again with your hands of soft clothes.

BT-CSIM-T

# Intramuscular Injection Training Model

A-313, Samsung Techno-valley, 140, Tongil-ro,  
Deogyang-gu, Goyang-si, Gyeonggi-do, 10594, Republic of Korea

Homepage: [www.btinc.co.kr](http://www.btinc.co.kr) / E-mail: [bt@btinc.co.kr](mailto:bt@btinc.co.kr)  
Tel: +82-2-2038-2903, +82-51-903-1144 / Fax: +82 303-3130-0607

Copyright(c) BT Inc. All rights reserved.